

DINO[®] 160XT



DINO Lift[®]

Get Lifted[™]

XT-SERIES

DINO® 160XT



Long horizontal outreach with full load
– ensures safe access to work positions.

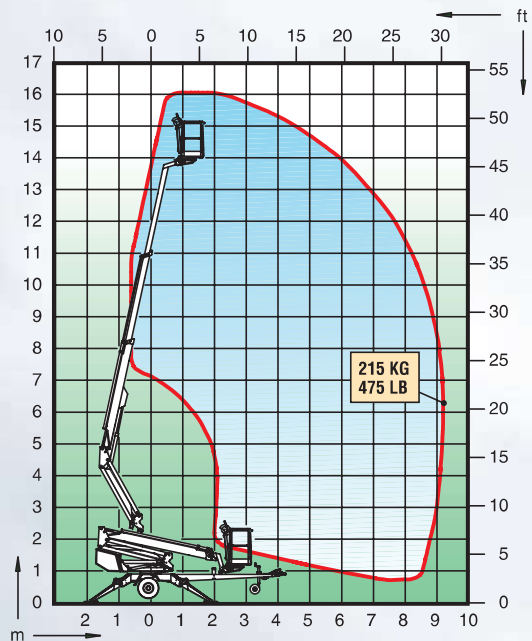


Compact and agile
– easy to tow and move on site.



Proportional steering with one joystick
– enables exact positioning of the platform.

Technical specification



Max. working height	16.0 m	52'5"
Max. platform height	14.0 m	45'10"
Max. outreach	9.1 m	29'10"
Support width	3.8 m	12'6"
Lifting capacity	215 kg	475 lb
Basket size	0.7x1.3m	2'4" x 4'3"
Boom rotation	cont.	cont.
Basket rotation	90°	90°
Boom control	proport.	proport.
Transport length	5.99 m	19'8"
Transport width	1.80 m	5'11"
Transport height	2.29 m	7'6"
Weight	1960 kg	4320 lb
Driving system	std	std
AC-socket in the basket	std	std
Electro motor	std	std
Petrol power pack	opt.	opt.
Diesel power pack	opt.	opt.
Gradeability	25%	25%

The specification is subject to change without notice.

XT-series DINOs are strong and versatile trailer-mounted platforms.

Articulating boom with telescopic top section and proportional steering ensure stable access to the most demanding work position, even over obstacles and in confined areas.

Thanks to the articulated boom the basket can be moved 2,5 metres vertically.

DINO Lift®

Dinolift Oy • Raikkolantie 145
FI-32210 Loimaa • Finland

Tel +358-2-76 25 900
Fax +358-2-76 27 160
Internet www.dinolift.com