

M250

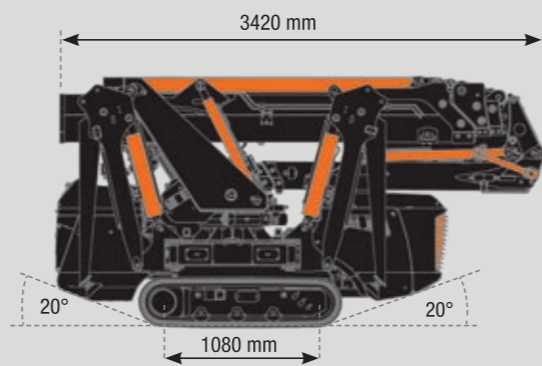
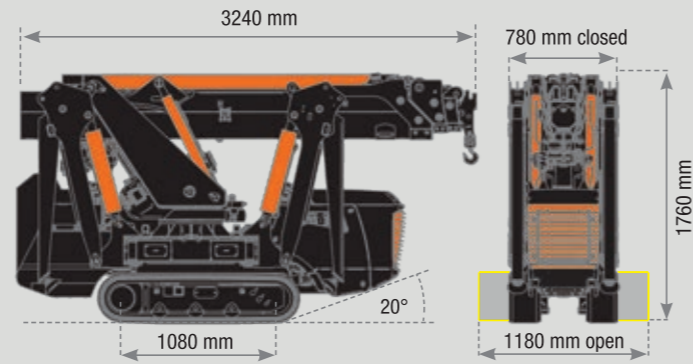
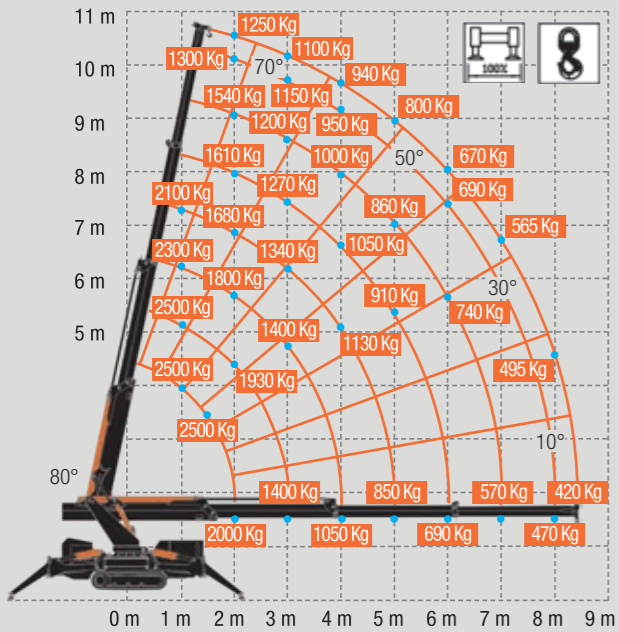


SCAN ME
PRODUCT
DETAILS

M250

M RANGE

M 250



Dimensions (H x W x L): 1,76 x 0,78 x 3,24 m

Weight (excluding accessories): 2420 kg

Lifting capacity: 2500 kg

Maximum outreach with hydraulic Jib (optional): 12,85 m

Maximum lifting height with hydraulic Jib (from the ground): 16,00 m

Maximum lifting height (underground-winch): -6,25 m



M250. Compact Crawler Crane.

M250, the attention given to the study of shapes and the exclusive line design. The aesthetic and functional harmony in a great technological project.

A solid crane, equipped with advanced technologies, top quality materials and components, to obtain the best overall performance. Built for indoor and outdoor use in limited spaces and hardly accessible buildings.

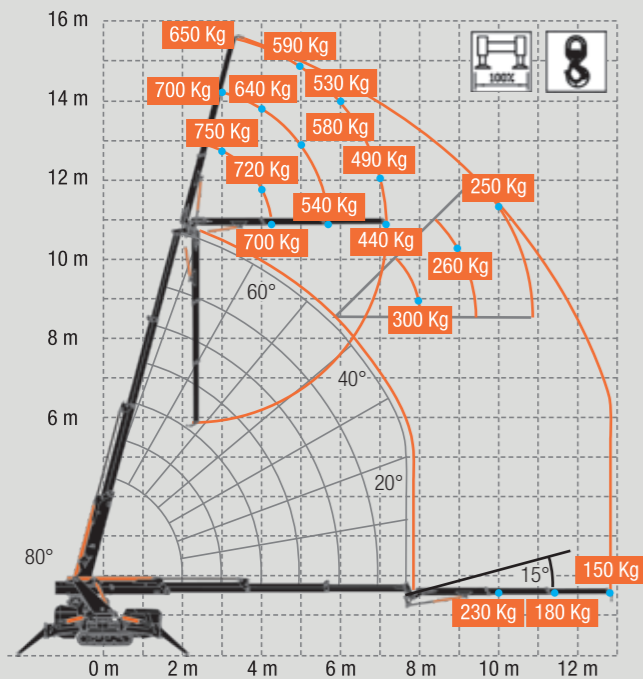
The dimensions and lightweight, combined to millimetric precision manoeuvrability, allow quick and less invasive operations.

Power:

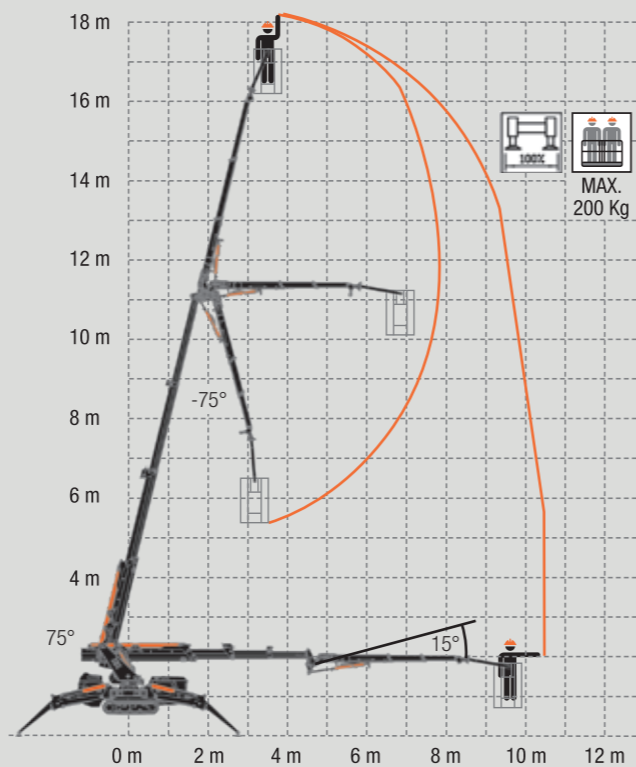
- 1250 kg load capacity at 10,40 mt. height, with boom in vertical position
- 650 kg load capacity at 16,00 mt. height, with boom and jib in vertical position.

Technical data can be modified without prior notice

M 250 + Jib



M 250 + Basket



Technical data can be modified without prior notice

